



Situated in Broomfield, Chippenham, this stylish two-bedroom end terrace house offers a delightful blend of comfort and modern living. The property boasts spacious and well-appointed accommodation, featuring two inviting reception rooms that provide ample space for relaxation and entertaining.

As you enter, you are greeted by a bright and airy lounge, perfect for unwinding after a long day. The modern kitchen is equipped with contemporary fittings, making it a joy for any home cook. Additionally, the property includes a convenient cloakroom, enhancing the practicality of the living space.

The two double bedrooms are generously sized, ensuring a restful night's sleep, while the modern bathroom is designed with both style and functionality in mind. The house benefits from gas central heating and double glazing, ensuring warmth and energy efficiency throughout the year.

## Viewing

Viewings Strictly by appointment with the sole selling agents Atwell Martin call or e-mail us today to confirm your appointment | 65 New Road, Chippenham, Wiltshire SN15 1ES

## Situation - Chippenham

Chippenham has a wide range of amenities to include High Street retailers plus supermarkets and retail parks and, in addition, there is a leisure centre with indoor swimming pool, library, cinema and public parks. Chippenham also benefits from excellent schooling with numerous primary and three highly sought after secondary schools. For those wishing to commute there is also a regular main line rail service from Chippenham station to London (Paddington) and

the West Country and the M4 motorway is easily accessed via Junction 17 a few miles north of the town.

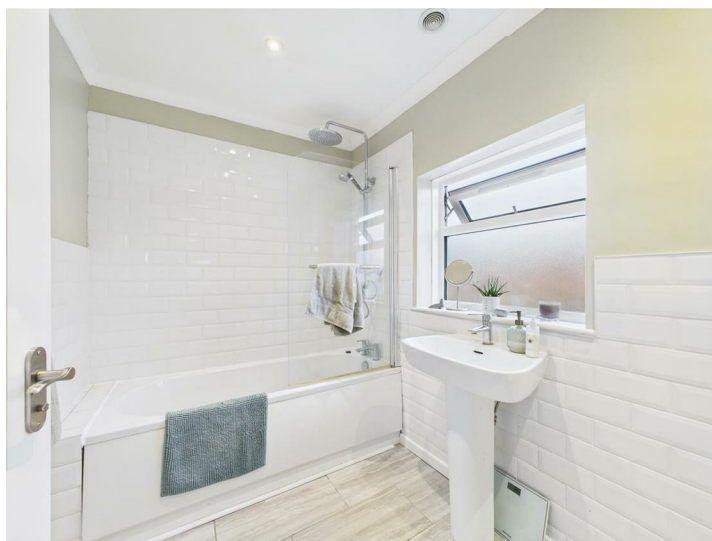
## Property Information

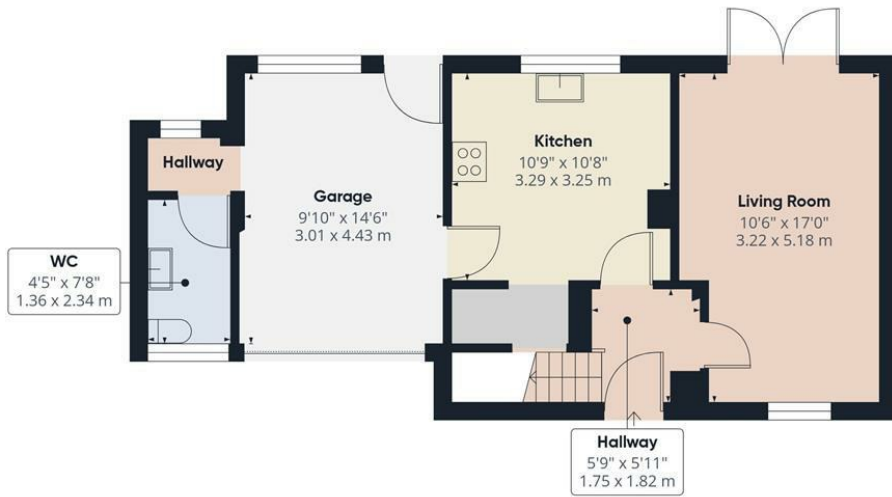
Utilities/Services - Electric, Water & Drainage, Gas Central Heating

Wiltshire Council Tax - Band B

Tenure - Freehold







Ground Floor



First Floor

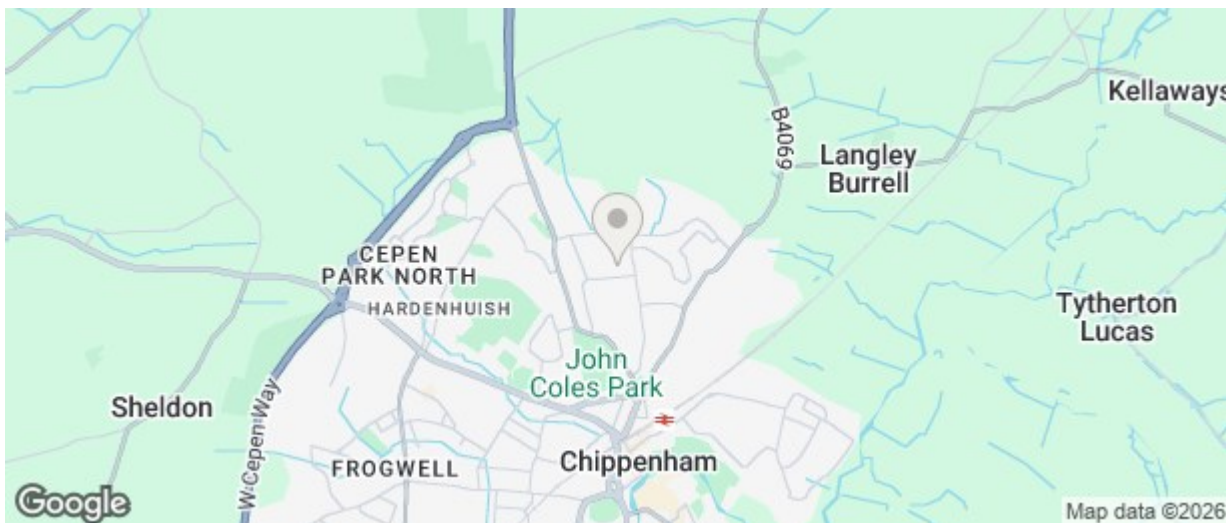


**Approximate total area<sup>(1)</sup>**  
867 ft<sup>2</sup>  
80.6 m<sup>2</sup>

(1) Excluding balconies and terraces

Calculations reference the RICS IPMS 3C standard. Measurements are approximate and not to scale. This floor plan is intended for illustration only.

GIRAFFE360



Energy Efficiency Rating		
	Current	Potential
Very energy efficient - lower running costs		
(92 plus) <b>A</b>		
(81-91) <b>B</b>		86
(69-80) <b>C</b>	72	
(55-68) <b>D</b>		
(39-54) <b>E</b>		
(21-38) <b>F</b>		
(1-20) <b>G</b>		
Not energy efficient - higher running costs		
England & Wales EU Directive 2002/91/EC		
Environmental Impact (CO <sub>2</sub> ) Rating		
	Current	Potential
Very environmentally friendly - lower CO <sub>2</sub> emissions		
(92 plus) <b>A</b>		
(81-91) <b>B</b>		
(69-80) <b>C</b>		
(55-68) <b>D</b>		
(39-54) <b>E</b>		
(21-38) <b>F</b>		
(1-20) <b>G</b>		
Not environmentally friendly - higher CO <sub>2</sub> emissions		
England & Wales EU Directive 2002/91/EC		

The particulars are set out as a general outline only for the guidance of intended purchasers or lessees, and do not constitute, any part of a contract. Nothing in these particulars shall be deemed to be a statement that the property is in good structural condition or otherwise nor that any of the services, appliances, equipment or facilities are in good working order. Purchasers should satisfy themselves of this prior to purchasing